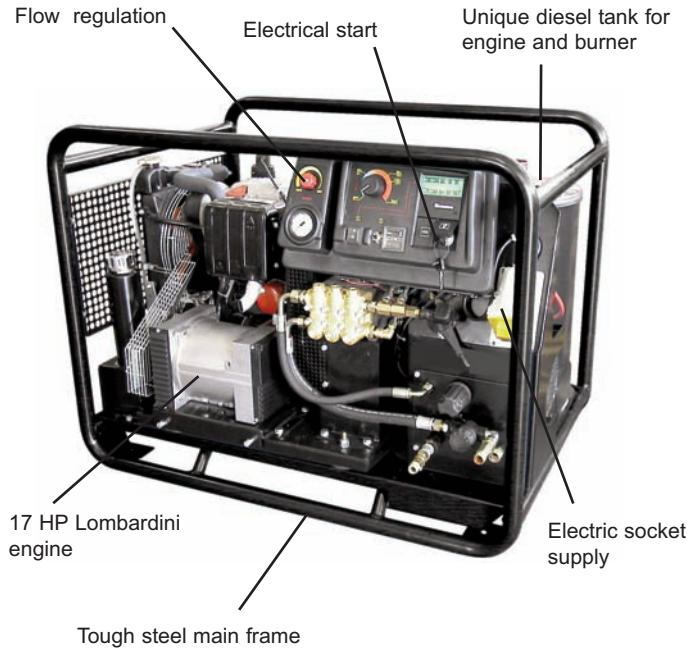
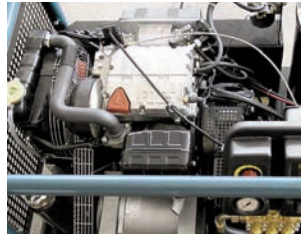


Hot water high-pressure cleaner with diesel engine and integrated electric generator

Contractor Plus 200/17HW



- Hot water self-contained unit with integrated electric generator and max 1.5 Kw fixed socket
- 17 HP Lombardini 2 cylinder water cooled diesel engine with electric start, complete with automatic power cut-off
- Three ceramic pistons, brass linear pump head with separated by-pass valve
- Suction and delivery S/S valves
- Max water inlet temperature 40°C
- Belt driven pump (1450 RPM)
- Automatic engine RPM regulator
- Manual power control
- Loose by-pass outlet
- Pressure regulator
- Glycerine pressure gauge
- Flow rate regulator
- Unique diesel tank for engine and burner
- Tough steel main frame



	Contractor Plus 200/17HW
Product No.	8.601.0052
Operat. pressure / max	30-200 bar
RPM pump	1600 RPM
Engine type	Lombardini diesel 17
Pressure	200 Bar
Flow Rate	1320 Ltrs/h
Max Temp.	140°C
Machine dimensions	113x76x85cm
Weight	218Kg



MORCLEAN



CALL FREE ON
0800 1300 402
 to arrange a visit to our
 working showroom
 and demo area

Morclean Ltd, Stephenson Road, Speedwell Industrial Estate, Staveley, Chesterfield S43 3JN, UK.
 Tel: +44 (0)1246 471147 Fax: +44 (0)1246 471277 sales@morclean.co.uk www.morclean.co.uk
 Registered in England No.465133

Morclean reserve the rights to update and amend the specification of any of our equipment & accessories in the interest of the customer. All prices subject to VAT @ SR. (E & O.E)