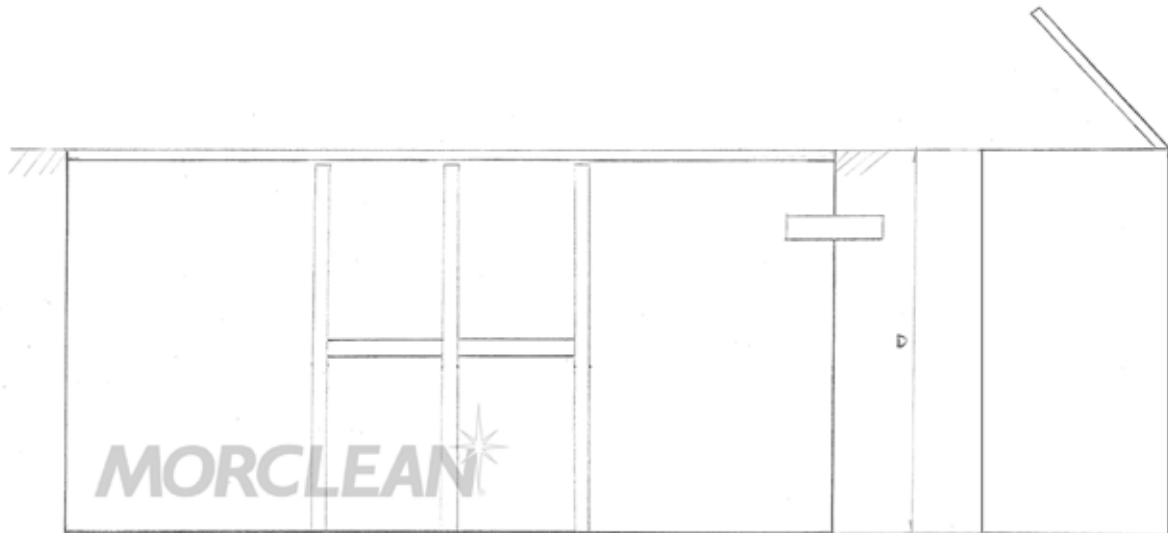
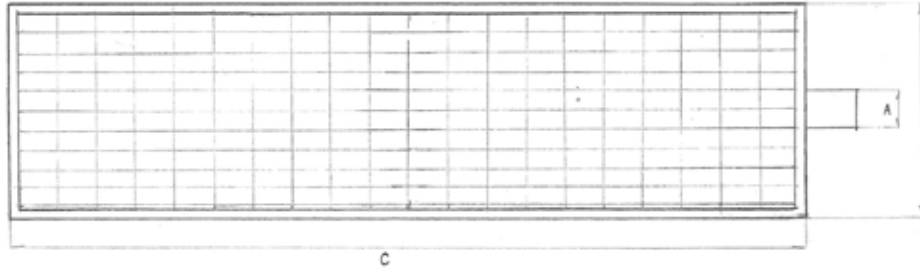


SiltTrap HEAVYDUTY for use with WashBays



Silt traps are designed to provide a sump for collecting wash water and is typically placed in the centre of a wash bay so that the wash water falls to one collection point.

Placed prior to the interceptor a silt trap collects larger debris and can be accessed via a hinged galvanised grating for easy manual emptying. As well as a collection point the silt trap collects debris and prevents excessive silt entering the interceptor.

The water from the wash bay can be collected in a silt trap. The GRP structure contains the water and is fitted with an outlet for connection to a mains foul drain via the interceptor.

The capacity of this silt trap would suit busier car wash sites, and for the cleaning of larger vehicles. This Morclean Silt Trap comes with a B125 or D400 Heavy Duty galvanised hinged grating. A smaller silt trap with less capacity is also available from Morclean, please ask for more information on the Morclean Silt Trap Lite.

Dimensions	ST1000
A Outlet (mm)	110 150 200
B Width (mm)	500
C Length (mm)	1000
D Height (mm)	1000
E Cover	B125 or D400

**CALL NOW,
FREE ON 0800 1300 402**
for more information.

